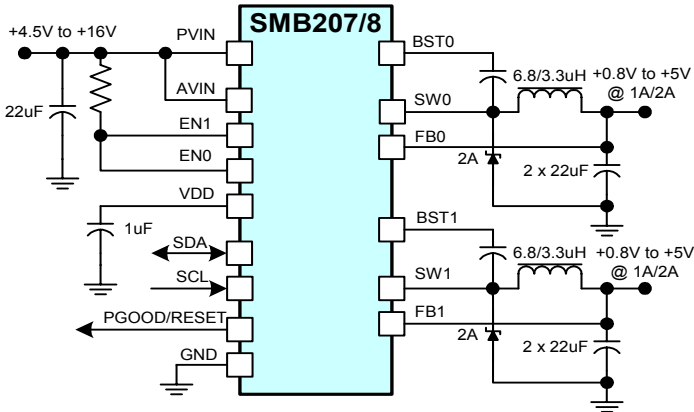


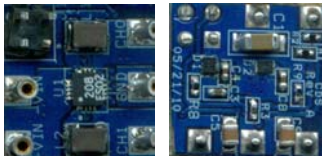
Tiny Buck Regulators Integrate Programmability and MOSFETs

Single/Dual 1A/2A/4A Outputs , Built-in Sequencing/Margining Digital Control Supports EnergyStar™ and “Green” Applications



**Fewest BoM Components
Smallest Solution Size (<100mm²)**

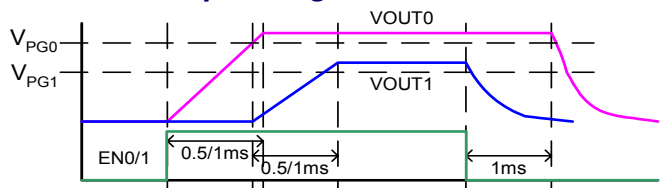
- Features**
- Integrated MOSFETs & Compensation
 - Digitally Programmable with Non-Volatile Configuration
 - Static/dynamic output voltage/margining
 - Output sequencing/timing/enable
 - Softstart timing/slew rate
 - RESET/PGOOD behavior
 - Built-in Safety and Protection
 - Cycle-by-cycle current limit
 - Over-temperature protection
 - Tiny 3mm x 3mm QFN Package
- Applications**
- Digital Television
 - Cable/Satellite Set-Top-Box
 - Broadband Modems/Gateways/Routers
 - SOHO Datacom Equipment
 - Embedded Computers
 - Disk Drives



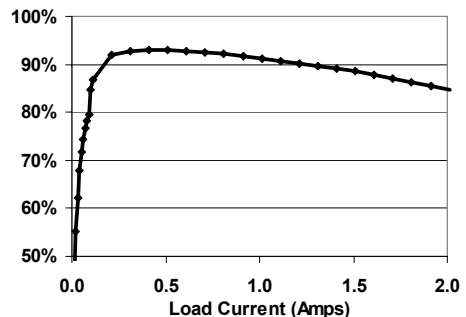
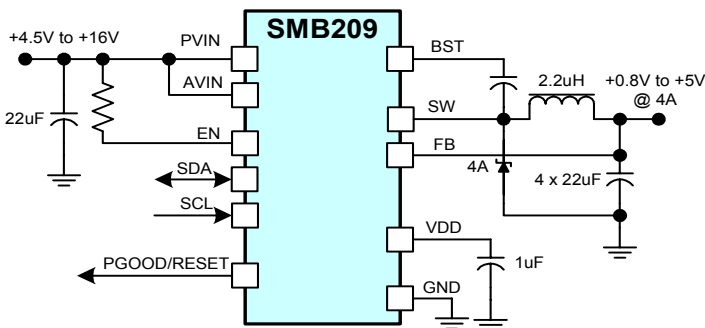
Actual 2-layer PCB Front/Back



Built-In Programmable Sequencing and Softstart

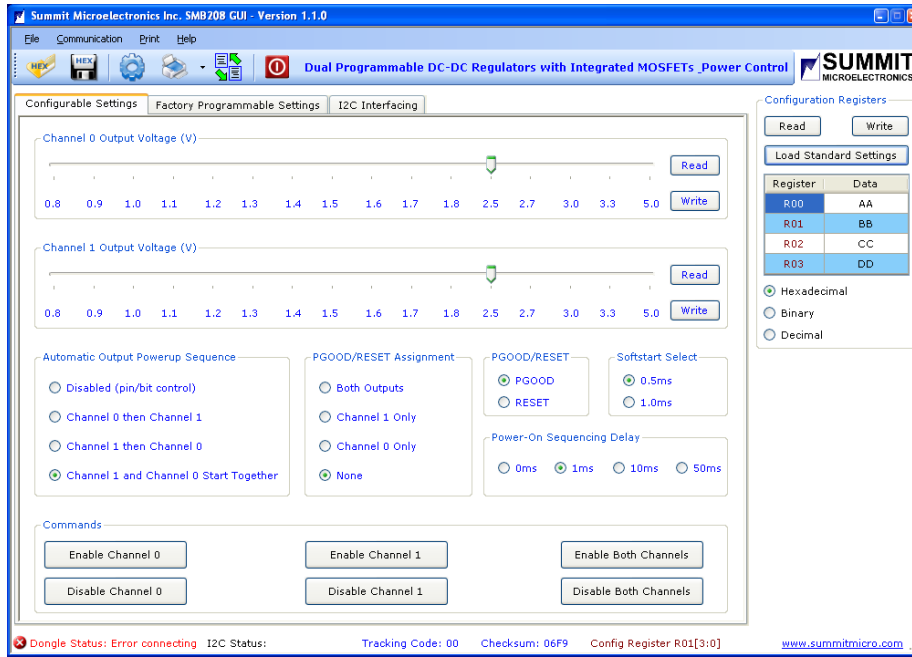


Efficiency: 5V IN, 3.3V OUT SMB208 Each Output



Tiny Buck Regulators Integrate Programmability and MOSFETs

I²C or GPIO Control, OTP Configuration, Easy-to-Use GUI Tools



Summit Programmable Power Manager Family

	SMB209/A	SMB208/A	SMB207/A	SMB211/212	SMB113/4/7	SMB214
Input Voltage Range (V)	4.5 to 16	4.5 to 16	4.5 to 16	4.5 to 13.5	2.7 to 6.0	2.7 to 6.0
# of Outputs	1	2	2	1	4	3
Output Current (A)	4	2/2	1/1	>15	>2/>5/>10	>5
Switching Frequency (kHz)	500/1000	500/1000	500/1000	250-1000	400-1000	400-1000
Output Voltage Range (V)	0.8 - 5.0	0.8 - 5.0	0.8 - 5.0	0.5 - 5.0	0.5 - VIN	0.5 - VIN
Output Voltage Accuracy (%)	2.5	2.5	2.5	1	1.5/2.5	2.5
Internal/External FETs	Internal	Internal	Internal	External	External	External
Sequencing	Prog	Prog	Prog	Prog	Prog	Prog
Soft-start	Prog	Prog	Prog	Prog	Prog	Prog
OC Limit	√	√	√	Prog		
Frequency Compensation	Internal	Internal	Internal	External	External	External
100mV Step Prog. Output Voltage	√	√	√	√	√	√
10mV Step Output Margining	"A" only	"A" only	"A" only	√	√	√
Output UV/OV Monitor	√	√	√	Prog	Prog	Prog
RESET/POWER GOOD Output	√	√	√	√	√	√
PWM/PFM Light Load	√	√	√	√		
Phase Interleaving (deg)	N/A	180	180	N/A	180	180
I ² C/SMBus + NV Configuration	√	√	√	√	√	√
Package	3x3 QFN-20	3x3 QFN-20	3x3 QFN-20	4x4 QFN-24	5x5 QFN-32	5x5 QFN-32