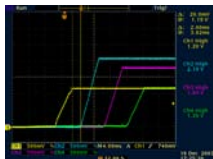
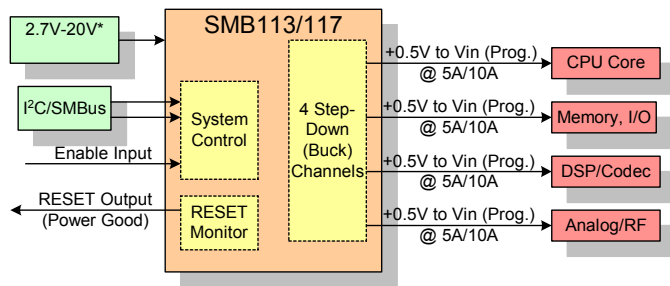


# Power and Control in One Chip

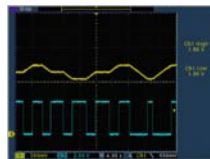
*Quad Output 2A-10A PWMs Combine Integration and Flexibility  
Cuts Solution Size by 60% and Provides Advanced Power Control*

**Create "Custom" Device Configurations with Non-Volatile Programming  
I<sup>2</sup>C Interface for Dynamic "On-the-Fly" Output On/Off/Voltage Control**

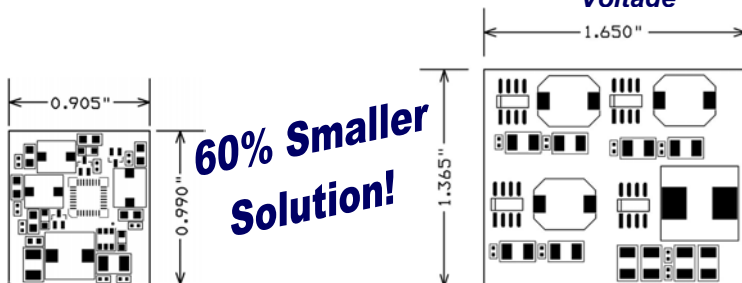


Sequencing

**Integrated  
Power Control**



Dynamic Output  
Voltage

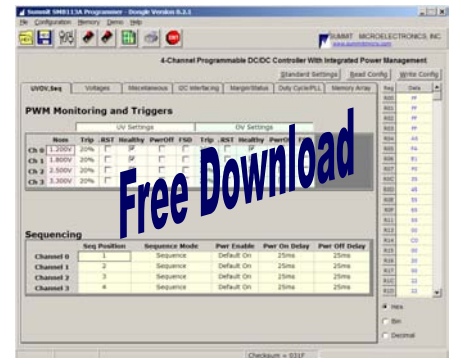


Summit Solution (<1  
in<sup>2</sup>)

Competitor's Solution (2.25 in<sup>2</sup>)

Features/Parameters	SMB113B	SMB113A	SMB117	SMB117A
Max Output Current (A)	2	5	7.5	10
Switching Frequency (kHz)	1000	800	400	250
Step-Down Outputs	4	4	4	4
Control Interface	I <sup>2</sup> C	I <sup>2</sup> C	I <sup>2</sup> C	I <sup>2</sup> C
Input Voltage Range (V)*	2.7-6.0	2.7-6.0	2.7-6.0	2.7-6.0
Output Voltage Range (V)	0.5-VIN	0.5-VIN	0.5-VIN	0.5-VIN
Typical Efficiency	>90%	>90%	>90%	>90%
Source/Sink "DDR" Mode	Y	Y	Y	Y
Operating Temp Range (°C)	-40 to +85	-40 to +85	-40 to +85	-40 to +85
Package Size (mm)	5x5	5x5	5x5	5x5
Package Type	QFN-32	QFN-32	QFN-32	QFN-32

\*For higher input voltages up to +20V – contact factory



Develop device with convenient  
programming tool and upload HEX  
file

-Summit ships pre-programmed  
"custom" units in high volume

## Features

- +2.7V to +20V\*
- ± 1.5% Output Voltage Accuracy
- >90% Efficiency
- I<sup>2</sup>C + Programmable Configuration
- Dynamic Output Voltage Control
- Pushbutton Enable Input
- Programmable FET Driver "Deadtime"
- Programmable Enable/Seq/Slew Rate
- UV/OV Monitors with RESET Control
- +0°C to +70°C or -40°C to +85°C

## Applications

- Cable/Satellite/DVR Set-Top Boxes
- Digital HDTV
- Slimline Notebook PC's
- SOHO Networking Equipment
- Automotive/Marine Navigation



For more information see:

[www.summitmicro.com](http://www.summitmicro.com)

**SUMMIT**  
MICROELECTRONICS

Programmable Power for a Green Planet™